

8700

Oxygen Permeation Analyser



When you need fast and reliable oxygen permeation testing for multiple bottles, packages, or films the Systech Illinois 8700 provides you with the ultimate solution.

- Tests films or packages
- 11 test stations - expandable to 66
- Ultra fast high production throughput

Applications

PET bottles
Coated PET bottles
Coated bottles for beer, wine etc.
Pet food pouches
Cereal packages
Pharmaceutical packaging
Fruit juice containers
Soft drinks bottles
Bottle closures
Barrier films



Features & Benefits

- Measurement of 11 samples simultaneously - individually started, stopped or delayed. Easy sample connection and rapid measurements make the 8700 the most efficient bottle/package/films permeation analyser available.
 - Ultra fast testing - Systech Illinois' Turbopurge™ technology ensures the fastest possible stabilisation time for the permeation measurement. Preventing out of specification production. Testing can be done in only 3 - 12 hours.
 - The 8700 eliminates errors and reduces operator training.
 - Confidence in your permeation measurement - the proven coulometric sensor provides you with reliable, repeatable, and accurate measurements, time and time again.
 - Simple Windows® based software control - easy to set up with QuickStart stored testing configuration settings and clear concise results presentation.
 - Low running costs - no special gases required, industrial grade nitrogen is all you need.
- The 8700 can provide you with all your requirements.**

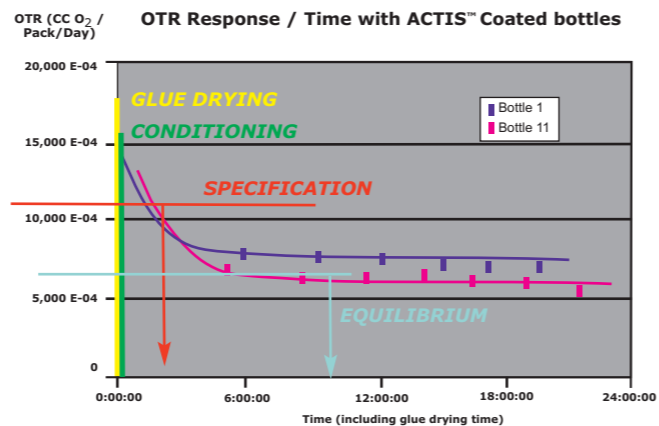
Conforms to: ASTM D-3985 ASTM F-2622 ISO 15105-2 DIN 53380 JIS K-7126
Electromagnetic Compatibility Directive 89/336/EEC Low Voltage Directive 73/23/EEC

8700 Oxygen Permeation Analyser

Ultra Fast Analysis for QC

Avoid production scrap and expensive re-work costs

The 8700 Turbopurge™ works in conjunction with the proprietary coulometric sensor. Complete test results for barrier coated PET bottles are available in less than 12 hours. Specification tests for QC can be obtained in less than 3 hours.



Multiple Test Stations

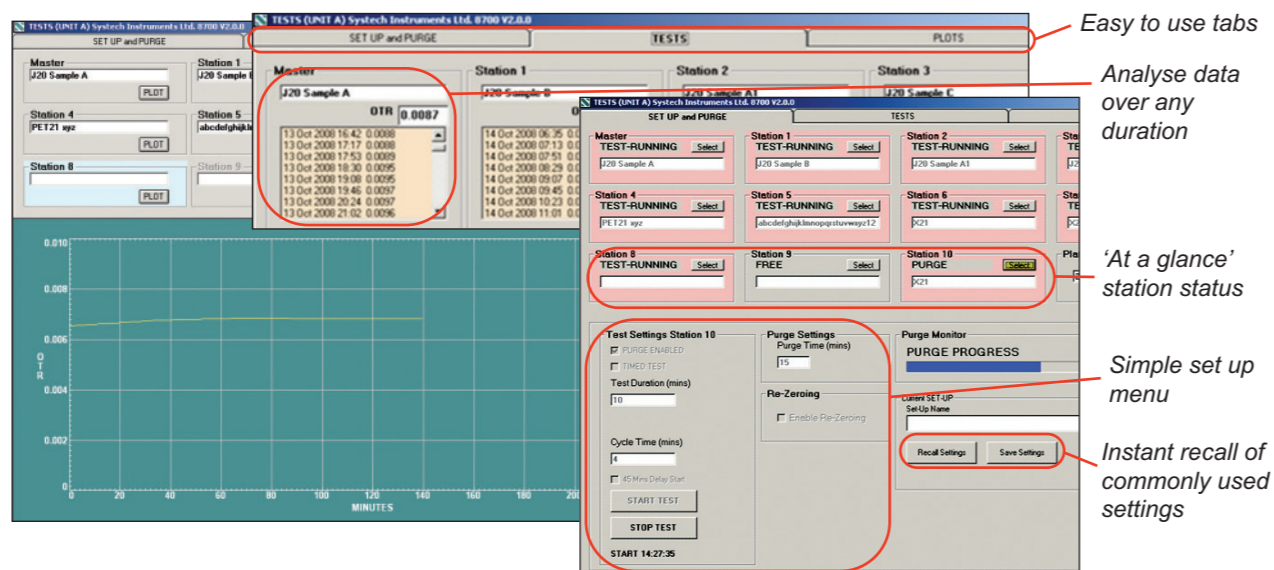
Simultaneous Measurements

Multi-station plastic bottle moulding units require multi-chamber OTR analysis. One 8700 is equipped with 11 test chambers as standard. For even greater capacity you can add 5 expansion units (66 test chambers total) controlled by a single work station. Each test chamber can be individually enabled / disabled / stopped / started / delayed.



Easy to Use

The control software is simple and intuitive. Training requirements are minimal, and QA staff can be carrying out OTR tests in a matter of minutes. In real time, the Windows® based software will provide you with a complete graphical representation of the measurement so that you can monitor the process and document the results.



Widest Measuring Range

One analyser has the ability to evaluate a wide variety of barrier alternatives and their corresponding performance.

Automatic Control

Utilises software to automatically manipulate mass flow controllers, temperature and all important test parameters while archiving valuable data, settings, and results graphically and digitally.

R & D and QC

Whatever your application may be, the 8700 has the speed and flexibility to be used as an invaluable QA tool, saving time and money. The instrument is equally at home within a Research and Development environment, enabling cutting edge barrier technologies to be tested for OTR.

How it works

The basic principle of permeation is to measure the amount of a gas that permeates through a sample. This is accomplished by sealing the sample to a chamber using a platen. The permeant gas flows on one side of the film or package and a carrier gas on the other side of the film or package. The transmission rate is the amount of permeant that is measured in the carrier gas over time at a known flow.

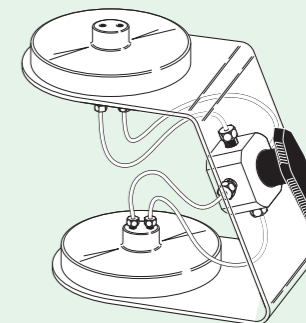
Built to be versatile

Versatile package testing by simply switching the 8700 bottle platens with optional alternate platens to analyse films, containers, canisters, pouches, bags, closures and more.

Adaptors

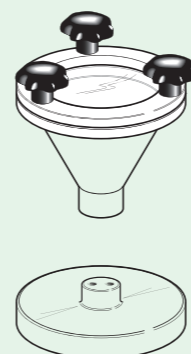
Delay Repeat Test Adaptor

Test any package that will take days to equilibrate. Connect and start test. Withdraw to shelf and reconnect later to verify equilibrium.



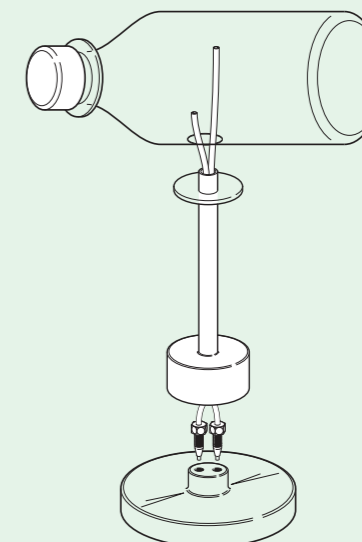
Film Test Adaptor

Test any film sample. May also be used to check the calibration of the instrument



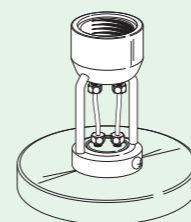
Complete Package Adaptor

Glue to complete package for easy and quick testing.



Bottle Adaptor

No need to glue bottle to adaptor anymore. Just screw in for fast testing.



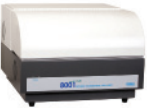
8000 Series - Oxygen Permeation Analysers

Systech Illinois' range meets the requirement for the testing of any application.



8001

533 x 533 x 305(mm) 28.1kg
2 stations for films or packages, precise humidity control, can switch between wet or dry samples within minutes.



8001 e-net

533 x 533 x 305(mm) 28.1kg
As 8001, with new coulometric oxygen sensor and an integrated computer.



8001L

533 x 533 x 305(mm) 28.1kg
As 8001, with new coulometric oxygen sensor.



8002

533 x 533 x 305(mm) 28.1kg
As 8001, but tests only dry or wet (assumed 100% RH).



8003

533 x 533 x 305(mm) 28.1kg
As 8001, but tests dry only.



8200

533 x 533 x 305(mm) 28.1kg
2 station for films or packages.



8501

356 x 356 x 279 (mm) 18.2kg
Reduced specification single station for film or package, dry test only.



8700

760 x 590 x 350 (mm) 65kg
11 stations for films or packages.

Technical Specifications

8001 8001 e-net 8001L 8002 8003 8200 8501 8700

	8001	8001 e-net	8001L	8002	8003	8200	8501	8700
OTR Test Range								
Films								
0.005 - 432,000 cc/m ² /day (0.0003 - 28,000 cc/100in ² /day) No masking required		✓	✓					
0.008 - 432,000 cc/m ² /day (0.0005 - 28,000 cc/100in ² /day) No masking required	✓			✓	✓			
0.04 - 100,000 cc/m ² /day (0.0001 - 5,000 cc/100in ² /day) No masking required						✓		✓
1 - 99,999 cc/m ² /day (0.07 - 6,800 cc/100in ² /day) No masking required							✓	
Package								
0.000025 - 1,000 cc/pack/day	✓	✓	✓					
0.00004 - 1,000 cc/pack/day	✓			✓	✓	✓		✓
Test Temperature Range								
5°C to 50°C (41°F to 122°F)	✓	✓	✓	✓	✓	ambient		ambient
15°C to 40°C (59°F to 104°F)							✓	
Controlled RH Testing								
Dry (0% RH) or generated RH (20% to 90%)	✓	✓	✓					
Dry and Unknown Wet RH (Assumed saturated or 100% RH)				✓				✓
Dry only					✓	✓	✓	✓
Expansion								
Expandable up to 5 Modules (Total 12 test cells)	✓	✓	✓	✓	✓	✓		
Expandable up to 5 Modules (Total 66 test cells)								✓
Test Sample Size								
Films 50cm ²	✓	✓	✓	✓	✓			✓
Films 100cm ²	✓	✓	✓	✓	✓		✓	
Packages						✓		
Calibration								
Films or NIST gas	✓	✓	✓	✓	✓	✓	✓	✓
Automatic Temperature Control								
	✓	✓	✓	✓	✓	ambient	✓	ambient
Power rating								
100-240 VAC, 50/60 Hz, 840 VA (max)	✓	✓	✓	✓	✓	✓		
100-240 VAC, 50/60 Hz, 150 VA (max)							✓	✓

Systech Instruments Ltd (UK)
17 Thame Park Business Centre,
Wenman Road,
Thame, Oxfordshire OX9 3XA
Tel: +44 (0)1844 216838
Fax: +44 (0)1844 217220
E-mail: advice@systech.co.uk
www.systechillinois.com

Illinois Instruments, Inc (U.S.)
2401 Hiller Ridge Road
Johnsburg, Illinois 60051
U.S.A.
Tel: +1 815 344 6212
Fax: +1 815 344 6332
E-mail: sales@illinoisinstruments.com
www.systechillinois.com

Illinois Instruments (Thailand)
6th fl Nopnarong Bldg No7
Ladprao23, Jatujak, Bangkok 10900
Thailand
Tel: +66 (0)2938 0798
Fax: +66 (0)2938 1058
E-mail: mai@illinoisinstruments.com
www.systechillinois.com

Systech Illinois (China)
Room 519, No.3 FuCheng Building
No. 900 Quyang Rd, Hongkou district,
Shanghai, China 200434
Tel: +86 21 65533022
Fax: +86 21 65539651
Email: info@systechillinois.cn
www.systechillinois.cn